



Who in my family must be registered with the V & S Tag Program?

Everyone who walks a dog off leash must be registered, and attend the V & S class. If only one family member has attended the class and is registered, then he/she is the only one allowed to have the dog off leash.

What are penalties for violating V & S?

Violators may be required to pay fines and, depending on the seriousness of the offense, could have V & S privileges revoked. Violations include having an off-leash dog without being registered in the program or failure to visibly display the V & S tag on the dog. Even if you have registered for the program, you may still get a ticket if you violate the V & S rules or your dog is off leash where V & S is not allowed.

Where can I find a trainer who can teach me and my dog to meet V & S standards?

Visit the V & S web site for tips on finding a dog trainer: www.voiceandsight.org

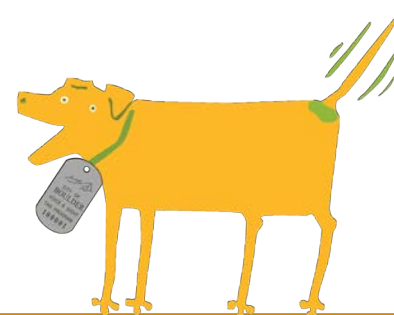
In addition to following V & S rules, you must pick up any dog excrement and dispose of it immediately in a trash can, or carry it with you until you can dispose of it. Leaving dog poop on the side of the trail, even in a plastic bag, is against the law. It pollutes water, spreads disease and offends other visitors.

How do I join the V & S Tag Program and get a tag for my dog?

If you think you and your dog can consistently meet V & S standards, you are required to attend a free class offered by the City of Boulder. Every person who will have your dog off leash must also complete the class. You can reserve a space in the class at this web site: www.voiceandsight.org

After taking the class, you can register with the V & S Tag Program and purchase a tag for each off-leash dog. All dogs registered in the program must either have a City of Boulder dog license (city residents), or proof of a current rabies vaccination (non-city residents). After attending the class and registering in the program, be sure to visibly display the V & S tag on your dog. You will be expected to understand and comply with all V & S control regulations.

V & S registration fees are used to pay for the cost of the program.



Open Space & Mountain Parks
www.osmp.org
(303) 441-3440
P.O. Box 791
Boulder, CO 80306

May 2014



City of Boulder Voice and Sight Tag Program



Photo by Ann Duncan

ENJOY.



PROTECT.

The City of Boulder has one of very few open space or park systems in the Front Range where you may walk your dog off leash. To enjoy this privilege, you and your dog must follow voice and sight control (V & S) requirements at all times, and your dog must visibly display a valid city V & S program tag.



Photo by Ann Duncan

Having a dog off leash under V & S on Open Space and Mountain Parks (OSMP) is an opportunity earned by patient and constant training, and knowing what you can expect from your dog's behavior in any situation. V & S is a tough standard for both dogs and their guardians.

Do I need a Voice & Sight Tag?

If you have a dog off leash on City of Boulder land where V & S is allowed, your dog must have a V & S tag, and you must be registered in the city's Voice and Sight Tag Program. (Boulder Revised Code 6-1-16, 6-13-2 through 6-13-5).

If you always keep your dog on a hand-held leash, you don't need a V & S tag.

What is Voice & Sight Control?

What must my dog and I be able to do?

Voice and sight control means the ability of the guardian or keeper to consistently control a dog by using voice commands, and sight commands such as hand gestures.

In order to have voice and sight control over a dog, you must always be able to see the dog's actions, and through use of V & S commands, be able to prevent the dog from engaging in the following behaviors **regardless of circumstances or distractions**:

- Charging, chasing or otherwise displaying aggression toward any person, or behaving toward any person in a manner that a reasonable person would find harassing or disturbing.
- Charging, chasing or otherwise displaying aggression toward another dog.
- Chasing, harassing or disturbing wildlife or livestock.
- Failing to come and stay with the guardian or keeper **immediately** upon command.

In addition, the accompanying guardian or keeper must:

- **Always have a leash for each dog under V & S** in their immediate possession, in a condition to be attached to the dog without delay if needed.
- **Have no more than two dogs simultaneously unleashed** at any time per guardian. Any additional dogs must be leashed.
- **Visibly display the V & S tag on every off-leash dog** at all times.

How about some specific examples?



V & S means **you must be completely attentive to your off-leash dog at all times**, even when hiking and chatting with friends, or enjoying recreational activities like rock climbing, biking or

running with your dog. For example, if you're running and your dog is behind you, you don't have your dog under V & S control because you can't observe its behavior. It might run off after a prairie dog or approach someone on the trail without your knowledge.



If you can call to your dog, but you can't see it, you don't have your dog under V & S control. If you can see your dog, but it's too far away to hear you or follow hand gestures, it isn't under V & S control.

If your dog approaches someone and **they** feel the dog was charging, chasing or displaying aggression towards them

or their dog, you could receive a court summons. So keep your dog close to you where you can control it immediately if needed, and only let your dog approach or interact with other people or dogs if invited.



V & S means your dog must not charge, chase or disturb wildlife or livestock. Wildlife includes deer, prairie dogs, squirrels, chipmunks, birds, or any other non-domesticated animal. Livestock includes cows, horses, llamas and any other stock animals you might encounter on the trail.

V & S means your dog must respond immediately to your command. If you command your dog to come and stay with you, the dog must obey immediately regardless of any temptations or distractions.

Finally, only people who have registered with the city's Voice and Sight Tag Program may have a dog off leash. For example, if your friend is watching your dog for you, and the dog has a V & S tag but your friend is not registered with the program, the dog must remain on leash with your friend.